

THE GREATER MEMPHIS AUTO DEALERS ASSOCIATION (GMADA) AND MOORE TECH HAVE LAUNCHED AN AUTOMOBILE TECHNICIAN SCHOOL.

The school will be operated by Moore Tech in a building owned by the GMADA located at 2785 S. Mendenhall Road in Memphis, TN.

The school will be a state of the art dealership set up as an educational facility. Students will be taught the skills needed to secure full-time automotive technician careers. Students will graduate with a two-year Associates Degree and will be eligible for ASE Student Certification at the conclusion of the two-year program. This program is constructed to exceed requirements for program certification at the MAST level of the ASE Education Foundation, formerly known as NATEF.



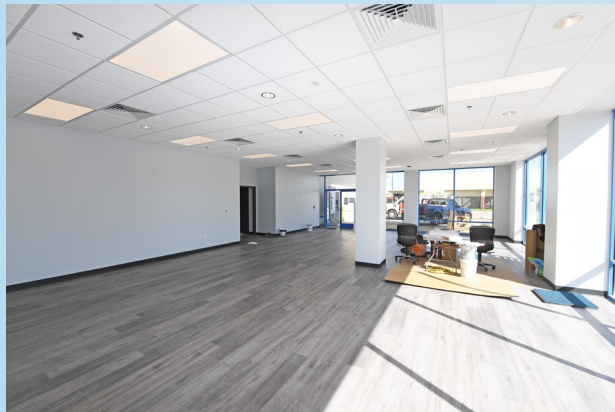
ABOUT GREATER MEMPHIS AUTO DEALERS ASSOCIATION (GMADA)

Founded in 1916, GMADA is comprised of more than 50 new-car dealerships in Greater Memphis and has a rich history of economic growth and community partnership. Dealer members of GMADA represent every Automobile OEM. GMADA dealerships employ over 3,000 people in Metropolitan Memphis.



ABOUT MOORE TECH

Moore Tech was founded in 1909 at 1200 Poplar Avenue with a grant from William R. Moore family. The college is private, non-profit and currently offers six programs including HVAC, Machining, Plumbing, Industrial Electricity, Building Maintenance and Welding. Moore Tech has an exceptional 65% graduation rate and 97% of these graduates secure jobs in their field.



FOR THIS SCHOOL OF THE FUTURE TO BE SUCCESSFUL WE NEED:

Equipment

- Two post vehicle lifts
- Flush mount scissor lift
- Alignment machine
- Tire changer
- Wheel balancer gsp 9700



- Work stations (bench box combination units black box/stainless tops)
- Black plastic roll carts
- Instructor roll carts
- Instructor tools for carts
- Coolant flush machine
- Transmission flush machine
- Brake fluid flush machine
- Power steering flush machine
- A/c recovery/charging station r134a
- A/c recovery/charging station r1234yf
- Under car transmission jack
- Power train lifting table
- Floor jack
- Jack stands
- Battery charger/tester
- Handheld battery tester ed 18 or newest
- Under car fluid drain pans
- Under car drain/evacuator

- Floor drain pans
- Digital multi meters
- Electrical experiment boards
- Generic scan tool
- Vehicle service information
- Air hose reels
- Drop light/extension cord reel
- On car brake lathe
- Off car brake lathe
- Off car brake lathe bench
- Parts washer
- Dealer management software
- Shop press
- Strut spring compressor
- Misc. Shop special tools
- Air compressor
- Compressed air dryer
- Transmission tear-down bench
- Shop exhaust system
- Floor scrubber
- Laptop computers

Automobile Components

- Complete engine assemblies (current production, fully dressed) and all required special tools
- Complete automatic transmission assemblies (as new as possible, current production) and all required special tools
- Complete automatic transaxle assemblies (as new as possible, current production) and all required special tools
- Complete manual transaxle assemblies and all required special tools
- Complete transfer case assemblies and all required special tools
- Rear drive axle assemblies and all required special tools

- C.V. Axle assemblies
- Complete vehicles, new model as highly trimmed as possible, scan tools for each, and ongoing manufacturer service information log in
- Technician training log in for ongoing instructor training
- Any component cutaways possible for display units
- Hybrid battery assemblies and all required special tools
- Hybrid drive (motor/generator) assemblies and all required special tools
- Hybrid service tool kit
- Any vehicle components not listed above



For more information on our needs and how to donate:

CONTACT

Director of Automotive Service
Technology: Martin Gambill
Admissions Director: Justin Benjamin
Phone: 901-726-1977
www.williamrmoore.org

MOORE TECH

AUTOMOTIVE TECHNICIAN SCHOOL

2785 S. Mendenhall Road
Memphis, TN

